

Exhibit 5 | Professional Qualifications

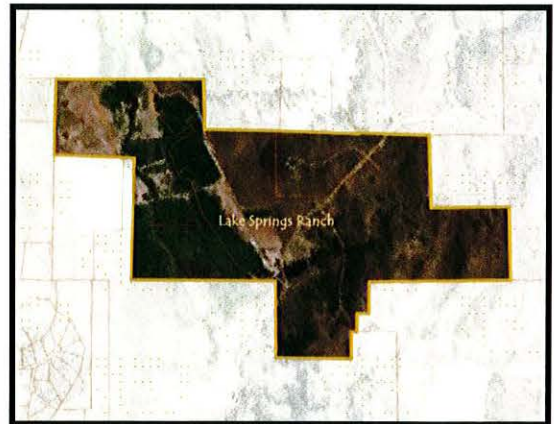


Exhibit 5a | Beach Environmental Qualifications

CURRICULUM VITAE

GARY L. BEACH

Principal Consultant

Beach Environmental, LLC

PROFESSIONAL CREDENTIALS:

Since 1979, professional background and expertise concentrated in the areas of environmental studies, environmental assessments, hydrologic studies, wetland determinations, delineations and permitting, wetland and aquatic restorations, wetland construction and impact mitigation, water supply, water rights and plans for augmentation, water resource management, wastewater, forensic hydrologic studies, western water law, economic and fiscal impact analyses, water and sewer facility construction and maintenance, and total system evaluations and modifications.

Expert testimony on water quality, water supply, environmental and economic impacts provided before both federal and state district courts, Tenth Circuit Court of Appeals, government agencies including U.S. Army Corps of Engineers, U.S. Forest Service, U.S. Environmental Protection Agency, Bureau of Land Management, the U.S. Fish & Wildlife Service, Colorado Water Quality Control Commission, Colorado Division of Parks, Colorado Division of Wildlife, county and local government agencies.

Academic credentials include graduate degrees in engineering and business and post-graduate work in engineering, wetland science and hydrology.

CURRENT:

Scientific analysis of environmental site conditions, wetlands identification, delineation, monitoring, rehabilitation, restoration, construction and banking. Stream and aquatic preservation, stabilization and restoration. Phase I, II and III Environmental Site Assessments, design of Phase III mitigation, remediation, reclamation and restoration plans, environmental improvements and enhancement planning, water resource and water quality evaluations, ground and surface water supply and treatment, natural resource management, economic impact and feasibility studies, water, sewer and shallow utility planning, construction, financing, operation, management, and administration. Pond, reservoir and hydro-power studies. Scientific research, analyses and examinations of water right historic use, transferability, exchange potential, and yield. Work directly with attorneys to analyze water quality, water supply delivery and augmentation requirements. Field investigations, forensic analyses and documentation of historic practices for use in water court proceedings. Certified Environmental Inspector No. 13592, Registered Wetlands Specialist No. 1580.

COMMUNITY:

Past Director and Executive Committee member - Metropolitan Denver Water Authority, Chairman of Water Resources Committee and member of the Legislative Review Committee. Past Director and Executive Committee member - Metropolitan Water Providers. Steering Committee member for Platte and Colorado Rivers Storage Project. Secretary of Budget & Treasury Committee for 12th World Congress of the International Commission on Irrigation & Drainage. Past member Board or Trustees, Colorado Mountain College. Lecturer on water rights and water resources for the University of Colorado and Colorado Mountain College, and water programs sponsored by the American Soil Conservation Service, Natural Resources Conservation Service, League of Women Voters, Northwest Colorado Council of Governments, various professional organizations, local bar associations, contractor groups, Board of Realtors, civic

groups and fellowships.

EDUCATION:

Mr. Beach holds advanced degrees in both business and engineering. He graduated Magna Cum Laude with a Master of Business Administration, and Summa Cum Laude with Master of Science in Environmental Engineering. He has authored more than 300 technical reports and papers, including:

Changing Hydrology of the Kettle-Morain Area of Southern Wisconsin, Undergraduate Project, University of Wisconsin – Madison.

The Value of American Indian Water Resources as an Economic Development Tool, Master Degree Thesis, Master of Business Administration, University of Phoenix.

Water Resource Scarcity & Sustainability, Master Degree Thesis, Master of Environmental Engineering, Madison.

PROFESSIONAL SOCIETIES:

State Association of Wetland Managers, Environmental Assessment Association, Institute for Wetland Science and Public Policy, member, American Water Works Association, American Water Foundation, Rocky Mountain Pollution Control Federation, National Association of Environmental Professionals.

REPRESENTATIVE CLIENTS & PROJECTS:

Beach Environmental has completed more than 500 projects throughout Colorado and southwestern United States. Following are some of the projects undertaken and completed.

Rocky Mountain Institute. Completion of comprehensive banking instrument related to the creation of 60 acres of constructed wetlands. Design, plan and supervise construction of grass, willow and forested wetlands to establish wetland mitigation bank. Assist in creating erosion and sedimentation plans to reduce soil transport. Aquatic studies related to the establishment of a cutthroat trout fishery and spawning beds.

Kipper Adult Fishery Rehabilitation. Design and construction of improvements to adult trout habitat along banks of Roaring Fork River. Modification of sediment loading, creation of stabilized bank undercuts, modification of pool and riffle sequences, installation of energy dissipaters, and self-cleansing pool syphons.

Puma Paw Ranch. Design and construction of venturi sand separator for intake structure to fish rearing ponds. Eliminate short-circuiting of pond circulation to improve nutrient and oxygen content.

Aspen Music School. Environmental studies, design and implementation of plan to clean up site contaminated with BTEX. System design included biologic, organic and naturally implemented solutions to reduce and relocate contaminated soils. Determination of wetland impacts and develop mitigation strategy.

Wetland Restoration. Identification and restoration of damaged or impacted wetland sites in Aspen, Basalt, Woody Creek, Emma, Carbondale, Glenwood Springs, Marble, Redstone, Snowmass Village, Gypsum, Eagle, Vail, Steamboat, New Castle, Silt, Rifle, Parachute, DeBeque, and numerous remote areas of Colorado.

Riparian Corridor Studies. Identification, mapping and protection strategies developed for riparian corridors and riparian areas throughout Pitkin, Eagle and Garfield Counties.

Aspen Center for Environmental Studies. Undertake and complete pro bono environmental

Laura Beach
4165 Crystal Bridge Dr
Carbondale, CO 81623
(970) 379-5715
lcbeach412@gmail.com

EDUCATION

University of Colorado at Boulder
2005-2010
Bachelor's Degree in Environmental Studies
Bachelor's Degree in Geography
Certificate of Hydrology
Geology Minor

High School graduate, *National Honor Society*, 2005
Aspen High School, Aspen, Colorado

PROFESSIONAL EXPERIENCE

Environmental Technician – May 1999-Present
Beach Resource Management, LLC, Aspen, Colorado
Beach Environmental, LLC, Aspen, Colorado

- Assist the Owner/ Manager with fieldwork such as wetland delineation, wetland analysis, environmental site assessments, water quality, ditch construction and maintenance among other items. Research and assess all fieldwork, generate reports and produce maps to be given either to the client or governmental agencies.

Landscape Manager –May 2004-Present
Beach Resource Management, LLC, Aspen, Colorado

- Supervise and manage seven landscapers as District Supervisor. Planned, coordinated and supervised landscaping performed at each of five Metropolitan Districts of upper Roaring Fork Valley. Trained landscapers appropriate techniques and general knowledge of the equipment used in specific projects.

Campus Printer Technician – August 2008-May 2010
Campus Printing Initiative (CPI)
Information Technology Services (ITS), University of Colorado at Boulder

- Service printers located in campus computer labs. ITS-CPI trains in networking software and management of campus technologies.

INTERESTS AND ACTIVITIES

Interests

- Travel, skiing/snowboarding, music, dance, motorcycling, hiking, animals.

Volunteer Experience

Gary L. Beach
Principal Consultant

private and public clients related to environmental permitting, consulting, construction, restoration, aquatic studies, et cetera.

Buttermilk Metro District. Oversee design and construction of well field and wells, pumping plants, treatment and storage for three subdivisions near Aspen, Colorado.

Financial/Feasibility/Economic Studies. Numerous financial, feasibility and economic studies have been completed for private developments, governments and special districts and non profit organizations. A partial listing of clients is available upon request.

- .. Tagert Lake Family Trust
- .. Redstone Water & Sanitation District
- .. Snowmass Land Company
- .. Aspen Skiing Company
- .. Crown Mountain Ranch
- .. Harley Davidson
- .. WestStar Bank
- .. Black Diamond Minerals Corporation
- .. ING Financial
- .. Snowmass Monastery
- .. Salvation Ditch Company

Genesis Water Group. Provide impact assessments and strategies for completing intrastate transfers of water to meet changing demands for physical water supplies. Over 200 assessments completed for Colorado, New Mexico, Utah, Arizona, Nevada, and California water users and providers.

Telluride Regional Airport Authority. Provide hydrologic consultant services for public water supply to support the expansion of the Telluride Regional Airport.

Town of Telluride. Evaluation of hydroelectric, mining, irrigation and municipal sources of supply.

Williams Technology. Environmental consulting services for pipeline and exploration projects in Southeast Colorado including water resource evaluations, and environmental studies.

Resolution Trust Corp. Full range of environmental studies to determine environmental condition of properties taken into receivership by RTC. Assist attorneys in identifying risks and exposure.

Silver Placer Mining Corp. Ground and surface water supply and water quality evaluations.

ARCO Coal Company. Provide hydrologic analysis for coal mine permitting. Analyze impacts due to ground subsidence on tributaries to the North Fork Gunnison River.

Black Diamond Minerals. Wetland delineation and permitting for gas exploration sites in Garfield County.

TOSCO. Provide environmental consulting for Colony Oil Shale Project in Battlement Mesa and Parachute, Colorado. Water rights analysis, water supply for man camp, dam and reservoir, water treatment, and site reclamation. Work completed for EXXON, ARCO, and Mobile Oil.

Town of Basalt. Completion of consolidation study to determine the costs and benefits associated with consolidating waste water services in the Roaring Fork Valley.

Parsons Engineering. Completion of environmental assessment for State Highway 82 Corridor Expansion.

Private Clients. Successfully completed more than 500 consulting assignments and projects for

studies to preserve and improve lands owned or operated by ACES. Studies include aquatics, wetlands, vegetation, and hydrologic.

Sportsmen's Wildlife Defense Fund. Water quality studies and testimony in support of mandamus litigation against the State of Colorado and the United States for violations of Clean Water Act, Pittman-Robertson Act, Dingle-Johnson Act and Colorado environmental laws. Served as lead consultant on all environmental issues and court proceedings.

Colorado Ski Country USA. Scientific analysis of the consumptive use and return flow characteristics of artificial snowmaking in Colorado. Fourteen sites across Colorado participated in this study during a three year study period.

Hydrologic Studies. Scientific and hydrologic analyses of water rights and water resources associated with more than 300 water supply and water quality projects throughout the western United States have been undertaken and successfully completed. A partial listing of clients is included below:

- .. Bear River Reservoir, Yampa, Colorado
- .. Devil's Thumb Ranch, Frasier, Colorado
- .. Cimarron Ranch, Casa Grande, Arizona
- .. Cibola Valley Irrigation District, Arizona
- .. The Navajo Nation, Window Rock, Arizona
- .. Harquahala Valley Ranch, Arizona
- .. Northern Cheyenne Tribe, Wyoming
- .. Arapahoe & Shoshone Tribes, Wyoming
- .. Tri-County Water Conservancy District, Montrose, Colorado
- .. Rangeview Metropolitan District, Aurora, Colorado
- .. New Jersey Zinc Mine Clean Up, Eagle, Colorado
- .. Placer Enterprises Corp., California
- .. The Colorado Gas - Arkansas River Project, Pueblo, Colorado
- .. Oxidation Systems, Inc., Arcadia, California
- .. Colorado Department of Transportation
- .. Buttermilk Metropolitan District, Colorado

Environmental Studies. Numerous environmental site assessments, site audits, environmental baseline studies, wetlands evaluations and delineations, restorations and environmental clean-ups have been completed. A partial listing of clients includes:

- .. DBS Air Charters
- .. Eubank Limestone Plant
- .. Municipal Capital Markets
- .. Norwest Banks
- .. Pitkin County Open Space & Trails
- .. Rocky Mountain Institute
- .. Colorado Department of Transportation
- .. Farnsworth Mining, Inc.
- .. Pitkin County, Colorado
- .. Resolution Trust Corporation
- .. Pitkin County, Colorado
- .. Town of Basalt, Colorado
- .. St. Benedicts Monastery

- o International Student Volunteers—June-July 2006, New Zealand
- o Goldrush Danceline—University of Colorado at Boulder
- o Outreach Club, Aspen Valley Hospital, Volunteer Music Teacher—Aspen, Colorado

Academic and Athletic Letters—2003-2005, Aspen High School

REFERENCES

Dale L. Miller, Professor
CU-Boulder
Department of Environmental Studies
397 UCB
Boulder, CO 80309
303-492-6629
Dale.miller@colorado.edu

Robert S. Anderson
CU-Boulder
Department of Geological Sciences
Institute of Arctic & Alpine Research—INSTAAR
399 UCB
Boulder, CO 80309
303-735-8169
Robert.s.anderson@colorado.edu

Heather Gosda, Employer/Supervisor
Beach Resource Management, LLC
711 East Valley Rd Unit 103
Basalt, CO 81621

Gary L. Beach, Employer/Supervisor
Beach Resource Management, LLC
Beach Environmental, LLC
711 East Valley Rd Unit 103
Basalt, CO 81621

Exhibit 5b | High Country Engineering Qualifications

Qualifications

High Country Engineering, Inc. is an employee-owned professional engineering firm established in 1985 in Glenwood Springs, which offers civil engineering, consulting, land surveying, planning, and construction administration services. The firm's qualified staff of twenty talented professionals includes four registered professional engineers, two engineering interns, two professional land surveyors, and two field survey crews, registered in Colorado.

We are not only committed to staffing the firm with the finest professionals available; we also have an on-going commitment to provide that staff with state-of-the-art equipment to assure its position at the forefront of civil engineering and land surveying techniques in the region, including the incorporation of GPS technology surveying equipment.

The firm's engineering and surveying professionals are responsible for numerous successful projects by utilizing innovative, functional, and aesthetically pleasing design solutions. Each project is founded on a clear understanding of the client's budget, schedule, and project goals.

In addition to the high quality of engineering services, our organization maintains excellence in land surveying covering all facets of the profession. These services include elevation certificates, improvement surveys necessary to meet mortgage company requirements, construction staking for residential, commercial, airport development, golf courses, municipal work, boundary surveys, topographic surveys, and plat preparation.

Below is a list of subdivisions we have worked on throughout the western slope of Colorado.

Project List - Subdivisions

Location: Eagle

2000008.01 El Jebel Med Cntr -Type A Minor Sub/Site
2000034.01 Abrams PUD - Preliminary Plan
2011018.52 Cotton Ranch Upper Mesa - Filing 7
2011018.69 Cotton Ranch - BLM Application
2011018.71 Cotton Ranch - Wetlands
2011018.88 Cotton Ranch-Filing 8
2011039.52 Cotton Rch Upper Mesa - Change Tank Loc
2011095.52 Donovan Parcel, Eagle Co - Subdiv. PUD
2011095.57A Arrowhead River Ranch - Additional
2021010.52 Hook Spur Rch - Subdivision Plans Prep
2021043.00 The Village at Cotton Ranch, Eagle Count
2061004.00 Sky Legend Filing 2 - 28 Lots Design
2061004.01 Sky Legend Filing 2 - 3 Lots Design
2061004.05 6-Lot Portion Sky Legend Fig 1 - Eng
2061004.06 6-Lot Portion Sky Legend Fig 1 - Svy
2061004.07 Sky Legend Filing 3 - Engineering
2061004.08 Sky Legend Filing 3 - Surveying
2061052.00 Stratton Flats PUD, Town of Gypsum
2061053.01 Village at Cotton Ranch, Eagle County
2101021.00 Stratton Flats PUD, Gypsum, Colorado
95093.16 Airport Gateway Ctr - Const Admin/Design
96026.01 Cotton Ranch, Eagle - Misc Consul/Eng
96047.01 Eby Creek Ph III - Clean Up/Finalization
96059.04 Eagle River Est (Willowstone) - Add Svcs
97047.05 Sopris Mesa Sub - Const Admin/Staking
97050.03 Skywatch - Additional Services
97089.01 Skywatch 2 - Subdivision
97095.04 Dotsero Ranch - Const Admin/Staking
98087.01 Valley View Homes - Preliminary/Final
99060.01 Snowberry, Eagle - Subdivision

Location: Garfield

2000005.01 Mamm's View Sub - Civil Eng/Land Survey
2000005.02 Sun Meadow Estates - Subdivision Plans
2000009.06 Midland Center, Garfield - Plans/Cost Est
2000009.07 Midland Ctr Rvs Plan Sets per SunDesign
2000014.04 Fairview Hts - Addtl/Const Obs Und.Drain
2000015.03 High Aspen Ranch - Add Svcs
2000023.01 Silt Mesa Sub - Sketch Plan/4 Single Fam
2000023.02 Silt Mesa(Patrick)-Prel Plan App/4SngFam
2000031.00 Glenwood Meadows Subdivision Design
2000031.02 Glenwood Meadows-Subdivision Design
2000031.03 Glenwood Meadows MOC
2000039.03 RF Preserve - Main Road Design
2000039.04 Roaring Frk Prsrv -Prel Plan Exc Main Rd
2000051.01 T.O. Ranch Subdivision -Preliminary Plan
2000051.02 T.O. Ranch Subdivision - Final Plan
2000051.04 T.O. Ranch, Garfield - Const Admin/Stakg
2000055.01 Eastbank Subdivision - Sketch Plan
2000056.01 Native Spgs Ranch - Preliminary Plan
2000056.02 Native Spgs Ranch - Final Plan
2000057.01 McPherson Subdivision - Sketch Plan
2000060.01 Monument Ridge - Sketch Plan/Exemp Plat
2000061.00 Funland Subdivision, Garfield County
2000061.01 Cattle Crk (Funland) - Sketch Plan App
2000062.01 Lake Spgs Ranch - Sketch Plan
2000063.09 MOC Site - Subdivision Plat/Stk Prop Cor
2011015.52 Rippy RV Park
2011021.52 Keralsa Twnhms Sub - Site/Util/Grd/Drain

Location: Garfield

2011074.52 Lt 6, Bk 1, Mel Ray Sub- Final Plan Prep
2011084.52 Palomino Prk 4 - Replat/Const Doc/Ph 2/3

2011085.82 4 Mile Rch Sub - Redevelopment of Subdiv
 2011101.52 River Oaks Sub, New Castle - Subdivision
 2011649.01A Five-Mile Ranch, GarCo - Addtl Services
 2021023.00 Stillwater P.U.D. - Phase 1
 2021023.22 Stillwater P.U.D. - Phase 2
 2021056.00 Valley View Villages Ph A - PUD Design
 2021056.04 Vly Vw Vlgs, Phs C & D - Order No. 953-1
 2021056.08 Vly Vw Vlgs, Phs C & D - PO #978
 2021057.00 Parcel B, Miller - 2-Lot Near Aspen Glen
 2021067.00 River Meadows-6 RV to 5 Mobile Hm Spaces
 2031019.00 Lot 2 White River Village Sub - Rifle
 2041008.00 Lakota Canyon Ranch - Silverado Spur Dev
 2041008.02 Lakota Canyon Rch - Silverado Spur
 2041013.01 The Bluffs Minor Sub, Garfield County
 2041025.03 Lake Spgs Ranch PUD, Garfield County
 2041035.00 Jewell Lane Subdivision, E of CR 259
 2051001.00 8608 Hwy 6 & 24 (Windermere) Parachute
 2051001.01 8608 Hwy 6 & 24 (Windermere) Parachute
 2051019.00 Ironbridge Ph II, III, & IV Improvements
 2051019.04 Ironbridge Ph 2, Eng & Svy Work Orders
 2051019.05 Ironbridge Clubhouse Improvements Ph 2
 2051019.57 Ironbridge Ph II, III, & IV Imps - Const
 2061006.00 Phase 1, Stillwater Eng, Garfield County
 2061006.01 Phase 1, Stillwater Svy, Garfield County
 2061064.00 Ironbridge Phase 3, Site/Sub Development
 2061064.02 Ironbridge - Golf Cart Path Redesign
 2071040.00 Rimrock PUD, Town of Rifle, Garfield Cty
 2071040.01 Rim Rock Development (Developer)
 2071042.00 Wal-Mart #5232 (Lot 11, RRV) Rifle, CO
 2081006.00 Stillwater Commercial Development, GarCo
 2081016.00 H Lazy F Mobile Hm Park-Water&Sewer/PUD
 2081016.04 H Lazy F Village Eng Per GarCo Comments
 2081021.00 Highline Ranch, Silt, Colorado
 94063.05 Spring Prk Meadows - Additional Services
 94096.04 Kay PUD/Carbondale Bus Prk - Addtl Svcs
 95020.04 Cedar Hills Sub - Additional Services
 95054.10 Deerfield Park Sub - Misc. Services
 95060.08 WhiteCloud Ridge Sub - Const Admin/Stak
 95060.09 Whitecloud Ridge - Ball Field/Adtl Ser
 96042.02 Grasmere Minor Sub - Revisions per COGS
 97042.05 Rose Ranch Phase 1 - Final Plans
 97094.01 The Promontory/Graham Mesa - Subdivision
 97094.10 Promontory at Graham Mesa Ph 2A
 97094.11 Promontory @ Graham Msa Ph 2 Resub
 97104.01 Johnson Subdivision - Final Plan
 98053.02A Palomino Prk, F4 - Final Plans/Const Adm
 98053.02B Palomino Pk 4 - Ph 2 Rdwy/Underdrain/Svy
 98053.02C Palomino Prk Flg 4, Ph 3 - Redesign Svcs
 99030.02 Aspen Equestrian Estates - Final Plan
 99030.03 Aspen Equestrian Estates - Add Svcs
 99046.06 Two Rivers Plaza - Addtl Work as Needed
 99046.08 Two River Plaza - Lot 2 - Land Rover
 99049.08 Riverside Park - Eng Svcs (Additional)
 99049.09 Riverside Village -Add Svc for SIA Agrmt
 99049.10 Riverside Park Sub - Subdivision Plans
 99049.11 Riverside Park Sub - Misc Copies/Svcs
 99054.01 Cerise Ranch - Sketch Plan Submittal
 99054.05 Cerise Rch, Phase 2 - Final Plan
 99055.06 Powerline Profession Prk - Addtl Svcs
 99077.03 W.Glenwood Estates-Final Plat
 99077.04 W.Glenwood Estates-Adj Property
 99077.05 W Glenwood Estates - Plat Amendmt/Addtl
 99077.06 W Glenwood Estates - Const Admin/Staking
 2000005.03A Sun Meadows (Per 6/7/06 Agreement)
 2000039.01 RF Preserve-Staking for Prelim Rd Design
 2091012.00 River Meadows Sub - City Code Consulting
 96098.07 Four Mile Ranch - Construction Mgmnt
 98068.07B Chaparral Aspen - Additional Per Clark
 98093.00 Buzz Minor Development, Garfield County
 96098.10 Four Mile

Location: Garfield/Glenwd Spgs

Location: Garfield/Parachute

2000077.01 Five Mile Ranch, Garfield - Misc. Svcs

2000077.02 Five Mile Ranch - Consulting
 2011649.01 Five Mile Ranch-Base Map Preparation

Location: Glenwood Springs

2000009.03 Midland Center - Additional Services
 2000009.04 Midland Ctr - SIA, Cost Est, Other Items
 2000054.02 1600 Riverside Dr - Sub. Application

Location: Grand Junction

2051043.00 Grand Valley Estates Engineering, MesaCo
 2051043.01 Grand Valley Estates Design Svy, MesaCo

Location: Mesa

2031049.00 Hall Subdivision ODP, Mesa Co-Order #926
 2031049.01 Hall Sub. ODP, Mesa Co-Order #955-1
 2041007.00 Sundance Crossing, Mesa County
 2041007.01 Sundance Crossing, Mesa County - Svy
 2051045.00 Jade Falls Subdivision, Mesa County
 2051046.00 Foursquare Simple Subdivision, Mesa Co
 2051046.01 Foursquare Simple Sub (Survey) Mesa Co
 2051046.03 Foursquare Simple Final Plat-Mesa County

Location: Mesa (Fruita)

2051043.02 Grand Valley Estates Flg 2 - Engineering
 2051043.03 Grand Valley Estates Flg 3 - Engineering
 2051043.04 Grand Valley Estates Flg 2 - Surveying
 2051043.05 Grand Valley Estates Flg 3 - Surveying

Location: Pitkin

2101642.01 12388 Highway 133, Redstone - Pitkin
 98068.07 Chaparral Aspen - Additional Services
 98068.07A Chaparral Aspen- Miscellaneous Services

Location: Rifle

2000014.01 Fairview Heights - Major Subdivision
 2011080.00 Rifle Comm Prop-Water

Location: Summit

2071065.00 Silver Trout Estate, Silverthorne
 2071065.01 Silver Trout Estates, Silverthorne
 2072010.00 Silver Trout Estate

Exhibit 5c | Hepworth-Pawlak Qualifications



Hepworth-Pawlak Geotechnical, Inc.
5020 County Road 154
Glenwood Springs, Colorado 81601
Phone: 970-945-7988
Fax: 970-945-8454
Email: hpgeo@hpgeotech.com

SCOTT RICHARDS
Engineering Geologist

EDUCATION

M.S., Geological Engineering, University of Utah, 2002
B.S., Environmental Earth Science, University of Utah, 1998
Minor in Chemistry

EXPERIENCE

Mr. Richards has over 10 years experience in geotechnical and geological engineering services. At H-P Geotech, he performs all aspects of geotechnical and geological engineering services. Cost estimation and proposals; design and implementation of a field testing program; evaluation of subsurface conditions; performing soil tests such as moisture, density, gradation analysis, atterberg, swell and consolidation and unconfined compression strength; calculation of foundation bearing recommendations and report preparation are all part of his job. He has monitored the construction of several types of deep foundations such as drilled piers, driven piles and screw piles to ensure compliance with engineered specifications. He has been involved in several slope stability projects where he has installed, monitored and provided analysis using inclinometers. His experience is diverse; he prepares proposals, performs field investigations, construction management, engineering lab work and prepares figures using autoCAD software. He prepares reports for geotechnical and geological engineering projects and is currently the Glenwood Springs office Geologist. He has performed subsurface investigations to determine the stratigraphy of coal beds for coal bed methane gas production which included describing cored bedrock and coal sample desorption analysis for reservoir production estimates. He has acted as the liaison between contractor and engineer during reconstruction of an earthen reservoir which included reviewing plans, observing soil placement methods and testing soil properties and placement densities. He published a Thesis for a Masters Degree in Geological Engineering entitled '*Holocene History of the Katalla River Valley, Alaska*' which included organizing a field investigation for a remote region of Alaska and staying within a budget where helicopter transportation was required. Geomorphology, geology and the use of Trimble survey grade GPS equipment was used to determine a geologic history and earthquake effects and recurrence intervals for his Thesis area. A survey monument was emplaced and registered as part of my study.

PUBLICATIONS

Richards, S.W., "*Holocene History of the Katalla River Valley, Alaska*", Masters Thesis, Geological Engineering, University of Utah, 2000.



Hepworth-Pawlak Geotechnical, Inc.
5020 County Road 154
Glenwood Springs, Colorado 81601
Phone: 970-945-7988
Fax: 970-945-8454
Email: hpgeo@hpgeotech.com

DANIEL E. HARDIN
Principal and Sr. Project Engineer

EDUCATION

M.S., Civil Engineering, Northeastern University, 1988
B.S., Civil Engineering, Northeastern University, 1981

REGISTRATIONS

Professional Engineer: Colorado
Certified Consulting Engineer: Colorado

EXPERIENCE Mr. Hardin is responsible for conducting geotechnical investigations, analysis and design of commercial, industrial and residential projects. Typical projects on which he is involved include hotels, commercial and residential developments. Municipal projects on which he has been involved include bridges, roads, water tanks and pipelines, parking garages, schools and employee housing.

His project experience includes: embankment stability studies for small dams, water retention ponds and debris flow mitigation basins; analysis and instrumentation for monitoring slope stability of steep slopes and retaining walls; development of subdivisions and individual residences up to 50,000 square feet; design of deep foundations including drilled piers, driven piles and auger cast piles; evaluation of distressed buildings including apartment buildings, offices, warehouses and residences; and evaluation of subsoils for hazardous materials such as lead, radon and petroleum products.

Mr. Hardin has also conducted geotechnical studies for towers, including electrical substations, radar and communication repeater stations and ski lifts. Industrial projects on which Mr. Hardin has been involved include natural gas pumping stations, coal processing facilities, and a cogeneration/desalination facility in Glenwood Springs.

Mr. Hardin supervises field technicians and engineers involved with construction monitoring, hazardous waste sampling and geotechnical instrumentation.

Other project experience includes hazardous waste investigations, tunnel instrumentation, and design and construction of large commercial and industrial buildings. Mr. Hardin also worked as a resident engineer on a 320-foot high tailings dam in Ohio.

Exhibit 5d | Colorado Wildlife Science, LLC Qualifications



BACKGROUND & QUALIFICATIONS

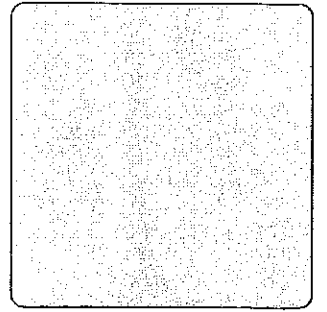
Colorado Wildlife Science, LLC (CWS) is a small wildlife and ecological consulting firm based in Basalt, Colorado, specializing in wildlife research, management, and monitoring, ecological assessments, conservation easement baseline inventories, ecological planning, habitat management, and ecological restoration. CWS applies a scientifically sound approach to biological resource studies and management. Our work combines professional integrity and strong academic training with extensive experience working for government, private, and non-profit clients. With an extensive network of professional collaborators that includes plant ecologists, foresters, hydrologists, and soil scientists, CWS leverages the collective knowledge of experienced professionals working toward practical, effective and cost saving solutions.

CWS provides expert services to a diverse array of clients. Since we are a small company, personal attention is ensured. We combine full in-house GIS (ArcGIS) with real time, sub-meter GPS to provide state-of-the-art spatial data, analyses, maps, and presentations. We have prepared Biological Assessments and Biological Evaluations, and contributed to EAs and EISs. CWS has worked with large private firms such as Jacobs, Carter and Burgess, Parsons, CH2MHILL, and SAIC as well as city and county agencies and governments such as City of Aspen, City of Glenwood Springs, Pitkin County, Colorado Department of Transportation, and Roaring Fork Transportation Agency. CWS is currently collaborating on the Pitkin County Airport Wildlife Hazard Assessment. CWS has prepared over 50 conservation easement baseline and present condition reports for 8 different conservation organizations in 5 western Colorado counties.

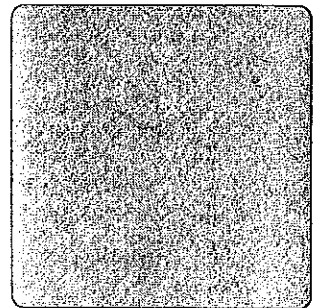
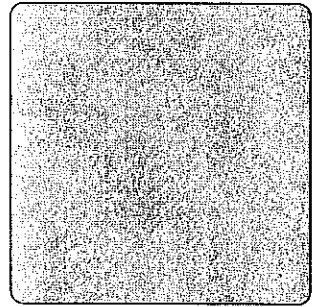
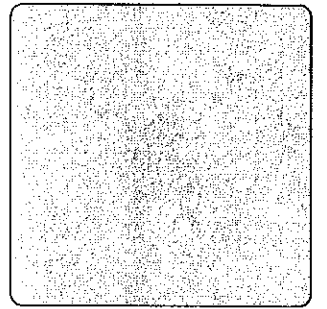
Owner and Wildlife Biologist Jonathan Lowsky, M.S. Wildlife Biology, Colorado State University, has a broad range of knowledge. With more than 19 years of professional experience with federal (US Forest Service), state (Colorado Division of Wildlife), and county agencies as well as two major universities (Colorado State University and University of Washington), Jonathan's career has focused on a diverse array of wildlife from bighorn sheep, elk, and songbirds to northern goshawks, flying squirrels, small mammals, and spotted bats. Mr. Lowsky's experience includes biological assessments and evaluations for NEPA compliance, conservation planning, GIS mapping and modeling, wildlife research, and ecological monitoring design and implementation, as well as wetland and riparian delineations, evaluations, and restoration. He has authored management plans and conservation easement baseline inventory reports and published scientific papers. An expert birder, experienced tracker, certified wetlands delineator, and passionate observer of wildlife, Jonathan has spent countless hours studying and appreciating Colorado's diverse ecological communities. A detailed description of Mr. Lowsky's professional experience and references are available. For additional information, please visit our website at www.coloradowildlifesience.com.

Exhibit 5e | Rocky Mountain Ecological Services Qualifications

)



Qualifications & Resumes



)

Zach Perdue

PO Box 635
Avon, CO 81620

Ph: 970.926.1299
zperdue@elev8-inc.com

Education:

B.S. Environmental
Management, Indiana
University

Software:

ESRI ArcGIS (ArcInfo,
ArcScene, ArcIMS),
Global Mapper, MapS-
erver, FUSION, AutoCad,
AutoCad Civil 3D, Visual
Nature Studio, Vue
Infinite, SketchUp, Adobe
Suite (Dreamweaver,
Flash, Photoshop, Illustra-
tor, InDesign)

Programming:

Avenue, Visual Basic,
KML, XML, HTML,
Javascript, CSS, PHP,
SQL and Actionscript
programming languages
for producing custom
scripts, extensions,
graphical user interfaces
and web development.

Zach Perdue has over ten years of diversified experience performing complex geospatial, statistical and visualization analyses and web-based application development in both the public and private sectors. After obtaining his B.S. in Environmental Management with an emphasis in Geographic Information Systems from Indiana University, Zach served as a GIS Technician with both the Bureau of Land Management and the United States Forest Service before transitioning to the private sector. Through the course of his professional career, Zach has worked with local, state and federal agencies, as well as a number of private firms, from small businesses and non-profits to Fortune 500 companies. His broad range of software experience and understanding of spatial data analyses and processing techniques have allowed him to apply unique, efficient and effective solutions to support a number of clients within the oil and gas, recreation and tourism, real estate, planning, engineering and architectural industries.

Professional History

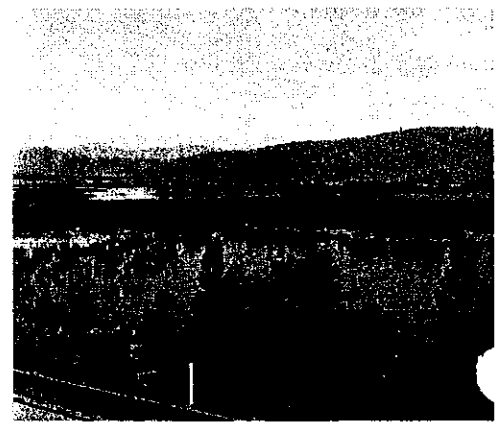
2008 - present – elev8, Inc. in Eagle County, CO. President – Founded GIS and visualization consulting firm to assist private firms and local, state and federal agencies in geospatial, statistical and visual analyses across numerous industries.

2005 - 2008 – International Alpine Design in Eagle County, CO. GIS Analyst/Planner - Performed primarily as GIS Analyst while assisting in design and planning functions. Performed spatial analyses and 3D modeling to understand environmental and visual impacts and communicate visions of design proposals.

2002-2004 – SE Group in Frisco, CO. GIS Analyst – Responsible for a variety of spatial and visual analyses to support numerous NEPA projects and documents primarily within the ski area industry.



Viewshed study and analysis.



Computer simulated complex wetlands system.

Representative Projects

Bull Mountain Unit Environmental Assessment, Bureau of Land Management, Gunnison County, CO

ETC Canyon Pipeline Environmental Assessment, Bureau of Land Management, Glenwood Springs Energy Office, CO

Old Dillon Reservoir Enlargement EA, Forest Service, Summit County, CO

Western Area Power Authority Phase I & Phase II ROW Vegetation Management, Forest Service, Western U.S.

Battle Mountain Resort Habitat Conservation Plan (HCP) and EIS, US Fish and Wildlife Service, Eagle County, CO

Mindy Wheeler

*PO Box 520604
Salt Lake City, UT
84152*

*Ph: 801.699.5459
wheelermindy@yahoo.com*

Education:

*M.S. Ecosystem Science,
Colorado State University*

B.S. Biology, Bates College

Professional Affiliations:
*Member of the Society for
Ecological Restoration*

*Board Member of the
Utah Native Plant Society*

*Chair person of the
Summit County Coopera-
tive Weed Management
Association*

*Member of the American
Society for Surface Mining
and Reclamation*

Areas of Expertise:
*Habitat restoration,
revegetation and rehabili-
tation*

*Vegetation community
mapping, monitoring and
assessment*

*Vegetation and rare plant
surveys*

*Floristic surveys and
vegetation sampling*

*Disturbed land
reclamation/ revegetation*

Mindy has 12 years of experience in ecosystems in the Great Basin and throughout the Rocky Mountain West in vegetation, wetlands, rangelands, soils, watershed issues and NEPA. She also has experience in integrating the many aspects of each ecosystem on which to base sound land management decisions.

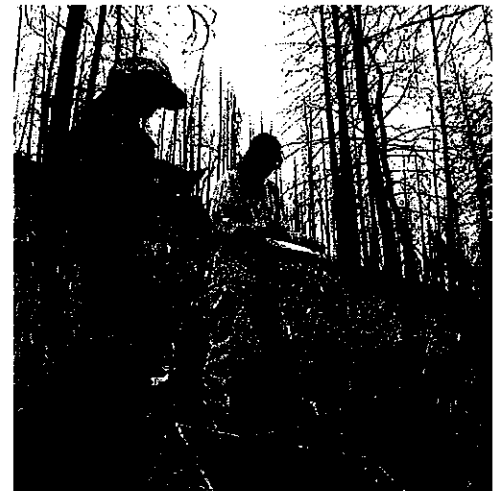
Mindy is dedicated to scientific objectivity and sound scientific techniques to produce reliable data in a most efficient manner. From these reliable data, sound management decisions and conscientious project design are generated with respect to both business and the environment. She has demonstrated innovative and cost effective solutions to assist with judicious land management choices. Her enthusiasm and effectiveness in her work can be seen through successful relationships with a wide variety of clients ranging from non-profit stewardship organizations to industrial corporations.

Professional History

2000 - present – WP Natural Resource Consulting, Inc., Salt Lake City, UT. Principal Ecologist - Provided leadership roles on a myriad of large projects as well as a sub-contractor on a wide variety of assignments ranging from wetland mitigation, NEPA, vegetation mapping, land use planning, endangered species assessments and ecological restoration among others.

1998-2000 – Reveg Environmental Consulting, Lehi, UT. Project Manager - Reveg is a subsidiary of Granite Seed and specialized in disturbed land reclamation that encompassed vegetation monitoring, erosion and sediment control, revegetation techniques and practices, plant and seed collection, and seed mix specification.

1995-1998 – Keammerer Ecological Consulting, Boulder, CO. Restoration Ecologist - Conducted vegetation surveys for SMCRA compliance, assisted in the creation of a vegetation database in MS Access for the state of Wyoming, and ecological restoration on a variety of sites.



Vegetation mapping at Los Alamos National Lab.



Rocky Point Gravel Mine.

Representative Projects

Reclamation Requirements and Monitoring Plan, SG Interests, LLC, Gunnison County, Colorado

Jordan River Wetland Creation and Monitoring, Carollo Engineers and Western Wetland Systems, Salt Lake City, Utah

Moapa National Wildlife Refuge Revegetation Plan, Otis Bay, Inc, Moapa, Nevada

Annual Reclamation Assessment Report, Graymont Lime, Inc, Delta, Utah & Wendover, Nevada

Habitat Suitability Assessment for the endangered Carson Wandering Skipper, California Department of Fish and Game, Susanville, California

Eric Petterson

PO Box 833
Glenwood Springs, CO
81602

Ph: 970.945.9558
epetterson@rmes-inc.com

Education:

M.S. Rangeland Ecosystem Science, Colorado State University

B.S. Wildlife Biology, Colorado State University

Areas of Expertise:

Wetland delineations & 404 permitting

Wildlife surveys & habitat management

NEPA & Endangered Species Act compliance

Wildlife impact reporting & documentation

Habitat suitability analyses & management

Landscape assessments & forest plan implementation

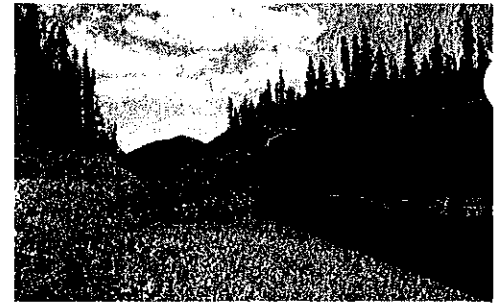
Eric has over 20 years of professional experience working in the natural resources management field. Working for the USDA Forest Service for 10 years in the recreation, forestry, and biological fields provided a broad-based, hands-on level of experience. Eric oversaw multiple fuels-management projects benefitting a number of resources, gaining an appreciation of the complexities of the NEPA process. Since 2000, Eric has managed RMES by providing cost-effective wildlife, wetland, and natural resource consulting services for the public and private sectors. With a strong background in NEPA and section 7 consultations with US Fish and Wildlife Service, RMES also brings new technologies and extensive use of GIS to provide clients with quantitative and thoughtful analyses to help guide projects through the permitting process.

Professional History

2000 - present – Rocky Mountain Ecological Services, Inc. in Glenwood Springs, CO. Principal Ecologist - Lead at firm providing wildlife, wetland and NEPA consulting and contracting services for governmental, private and industry projects. Mr. Petterson has provided project supporting documentation as well as project management services.

1994 - 2000 – USDA Forest Service in Fort Collins, CO. District Wildlife Biologist/Fuels Planner - Responsible for wildlife related NEPA compliance and project level resource input on the 200,000 acre Canyon Lakes Ranger District. Also served as Fuels Planner in charge of development of NEPA documents for hazardous fuels and wildfire mitigation projects on District.

1991 - 2007 –USDA Forest Service in Fort Collins, CO. Biological Technician - Biological Technician fulfilling various biological surveys, inventories and baseline condition documentation for fuels reduction, timber harvest and recreation related projects.



Henderson Mine conveyor.



Aspen-Leaf Trunkline.

Representative Projects

Bull Mountain Pipeline, SG Interests I, Ltd. , Stormwater & Environmental Compliance 2009, Gunnison, Delta, Mesa & Garfield Counties

Aspen Leaf Trunkline, SG Interests I, Ltd., Stormwater & Environmental Compliance 2009, Gunnison County, CO

ETC Canyon Pipeline Environmental Assessment, Bureau of Land Management, Glenwood Springs Energy Office, CO

Battle Mountain Resort, Ginn Battle I, LLC, Wildlife & VEgetation Impact Assessments, Eagle County, CO

Eagle Mine Superfund Site Remediation, Environmental Protection Agency, US Fish and Wildlife Service, Eagle County, CO

Lisa Sakata

*PO Box 1095
Frisco, CO 80443*

*Ph: 970.389.2748
lisa.sakata@comcast.net*

Education:

*B.A. Peace Studies,
Colgate University*

*Post-Baccalaureate
Program in Pre-Medicine,
Augusta College*

Areas of Expertise:

*NEPA project manage-
ment and compliance
documentation*

*Endangered Species Act
and Clean Water Act
permitting and compli-
ance*

*Facilitation of public and
agency involvement*

*Technical writing and
editing*

Lisa has nearly ten years of professional experience as an environmental analyst, focusing on policy, permitting, and process management. As a third-party contractor to federal agencies, she has coordinated and completed numerous environmental compliance documents with support from sub-contracted resource specialists across the western US. She offers a strong background in compliance with the National Environmental Policy Act as well as project management, organization, communication, and facilitation skills to manage the process and prepare the appropriate documents. She has also coordinated compliance with the Endangered Species Act, Clean Water Act, and Historic Preservation Act for many of these projects.

Lisa's strengths include clear and concise written and verbal communication skills, organization, and facilitation. Combined with her background in conflict resolution, these skills have enabled Lisa to successfully help many clients achieve environmental compliance and get a decision through the NEPA process in a timely manner.

Professional History

2006 - present -- Lisa Sakata, Inc. in Summit County, CO. President -- Established environmental consulting business to assist clients with policy issues; federal, state, and local permitting; and process management.

2004-2006 -- Grand Environmental Services in Grand Lake, CO. Environmental analyst -- Prepared several NEPA compliance documents, including analysis of the social and economic, recreation, and visual resources. Prepared extensive documentation to support permitting under section 404 of the Clean Water Act.

2000-2004 -- SE Group in Frisco, CO. Project Manager/Environmental Analyst-- Worked as a third-party contractor to the Forest Service to manage the process for NEPA projects and documents primarily for ski areas. Resource specialties include recreation, visual resources, and social and economic resources.



Battle Mountain's East property.



Old Dillon Reservoir.

Representative Projects

ETC Canyon Pipeline Environmental Assessment, Bureau of Land Management, Glenwood Springs Energy Office, CO

North Property Tailings Redevelopment, Ginn Battle North, LLC, Eagle County, CO

Blue Valley Ranch Land Exchange EA, Bureau of Land Management, Kremmling Field Office, Kremmling, CO

Old Dillon Reservoir Enlargement EA, Forest Service, Summit County, CO

Battle Mountain Resort Habitat Conservation Plan (HCP) and EIS, US Fish and Wildlife Service, Eagle County, CO

Copper Mountain Resort Trails and Facilities Improvements EIS and Kokomo EA, US Forest Service, Copper Mountain, CO

Exhibit 5f | Reid Architects, Inc. Qualifications

SUZANNAH V REID
REID ARCHITECTS, Inc.

Licensed Architect State of Colorado 1988
American Institute of Architects member 1992-2003

EDUCATION

UNIVERSITY of PENNSYLVANIA Philadelphia, PA
Master of Architecture, May 1985

SKIDMORE COLLEGE Saratoga Springs, NY
Bachelor of Arts, May 1982

INSTITUTE for ARCHITECTURE and URBAN STUDIES New York City, NY
Fall 1980 -Spring 1981

EXPERIENCE

REID ARCHITECTS, Inc. Aspen, CO
Founder and Principal December 96 forward

CARBONDALE HISTORIC PRESERVATION CONSULTANT Aspen, CO
November 2007 forward

PITKIN COUNTY HISTORIC PRESERVATION OFFICER Aspen, CO
January 2000 forward

PEMBER + REID ARCHITECTS, INC. Aspen, CO
Co-founder and Principal August 92 - December 96

REID ARCHITECTS Aspen, CO
Founder and Principal August 1991 - January 93

HARRY TEAGUE ARCHITECTS Aspen, CO
Associate, Project Architect August 1986 - August 1991

POSITIONS

City of Aspen Historic Preservation Task Force, member March 2008 onward

A Fragile Heritage: Aspen's Historic Preservation Debate,
City of Aspen sponsored documentary - featured speaker Summer 2008

Town of Carbondale Historic Preservation Consultant Fall 2007 onward

Teaching Artist – Center for Excellence in Education (CMC) May 2001 to May 2002

AIA Colorado Board of Directors - Secretary Dec 2001- 2002

Teaching at CMC - Historic Preservation Course Fall 2000

City of Aspen – Infill Committee Member June 2000 to Jan 2002

AIA Colorado West Chapter Board Member President 2000

AIA Colorado Board of Directors Director 2000

City of Aspen Historic Preservation Commission, Chairman June 1996 to 2002

Entrance to Aspen Task Force Summer 1999

Aspen Area Community Plan, Committee Member, Super Committee Fall 1998-Spring 99

RECENT RESEARCH & PLANNING PROJECTS

- Carbondale Historic Preservation Consultant November 2007 onward
Providing staffing services for the Carbondale Historic Preservation Commission. Services include; development application review, board education and development of process and procedures, assistance for development of design guidelines and incentives for preservation
- Carbondale Historic Survey Began February 2008
Survey of 20 sites that represent the residential areas and range of architectural styles seen in the original Carbondale townsite.
- Meeker Historic Structures Survey Began December 2007
Survey of 30 sites that represent the historic core of the original Meeker townsite. This survey is being conducted for the University of Colorado Center for Community Development.
- Eckert Presbyterian Church Historic Structure Assessment Began Spring 2007
Complete a detailed evaluation of the existing historic church structure and systems. Development of a complete scope of work with preliminary cost estimating. Preparation of a written document with text and pictures describing the current conditions and deficiencies with the goal of obtaining grant funding for the upgrades required for the continued preservation and safety of the building.
- Aspen Community Church Historic Structure Assessment Completed 2/2007
Completed a detailed evaluation of the existing historic church structure and systems. Development of a complete scope of work with preliminary cost estimating. Preparation of a written document with text and pictures describing the current conditions and deficiencies with the goal of obtaining grant funding for the upgrades required for the continued preservation and safety of the building.
- Carbondale Inventory of Historic Sites and Structures 2005-2006
Survey of 30 sites that represent the commercial core of the original Carbondale townsite.
- Grand Junction Inventory of Historic Sites and Structures 2004-2006
Survey of 450 sites that represent the prevalent building styles of the early and mid 20th century in the community of Grand Junction.
- Redstone Historic Preservation Design Guidelines Spring of 2004
Re-write of 1996 guidelines for construction in the Redstone Historic District. Includes text, graphics, photography and production of guidelines.
- Glenwood Springs Inventory of Historic Sites and Structures #3 Spring of 2004
Survey of 20 sites that represent the prevalent building styles of the early and mid 20th century in the community of Glenwood Springs.
- Glenwood Springs Inventory of Historic Sites and Structures #2 Completed 8/2003
Survey and completion of 53 inventory forms. Focusing on the range of architectural styles present in Glenwood Springs in the late 1800's and early 1900's.
- Glenwood Springs Inventory of Historic Sites and Structures #1 Completed 8/2003
Survey of Glenwood Springs to establish a "structures of merit list" requiring the review of over 400 sites, and development of integrity evaluation forms for twelve styles present in the area.
- City of Aspen - Inventory of Historic Sites and Structures Completed 10/2000
A survey of over 330 sites in the City of Aspen including 50 sites of more recent vintage. Required the development of contexts for the more recent sites and evaluation of over 100 sites for consideration of inclusion in the survey.

RECENT ARCHITECTURAL PROJECTS

- Allgaier Residence Construction begins spring 2008
The design of an affordable housing unit at the Burlingame development. This project requires coordination with a manufactured home company and the Design Guidelines established by the City of Aspen for the Burlingame development.
- Gates Residence Ongoing
A variety of interior remodel projects including new interior finishes, built-in furnishings and exterior updates to an existing residence
- Willits Bend Under Construction
With Black Shack Office Architects. The design and construction of a live work development in the mid valley. Work included planning, design and implementation of phased construction of the buildings. The development includes nine condominiumized buildings enclosing numerous living, working and artist spaces.
- Weiner Residence Completed 8/2006
Extensive remodel and addition to an existing residence. The design of the alterations and additions brought together several styles represented by the original 1970s house and subsequent additions from the 80s and 90s.
- Hidden Lake Cabin Completed 10/2005
Design and Construction of a single family cabin. Located at 11,000 feet, with self sufficiency and simplicity in mind. The cabin is designed for rustic but comfortable living. Located, "off the grid", in a spectacular setting among numerous 13,000 ft peaks.
- Byrnes Residence Completed 1/2004
Design of addition and remodel of historic cottage. Included site planning and review of historic lot split, historic designation and compliance with Aspen Historic Preservation Design Guidelines.
- Trettin Residence Completed 12/2003
Associate Architect with ShoP Architects. Single Family residence in the City of Aspen. Utilizing new technologies for mass customization allowing for the use of non traditional forms while maintaining economical construction methods. Project required numerous planning approvals and public meetings, project was tabled after all approvals were received.
- RBH House Completed 6/2002
Remodel and addition to an existing residence
- Wagner Park Edge Completed 6/2002
With Willis Pember Architects - A new bathroom facility and exhibition pavilion for the entrance to Wagner Park at the intersection of the Cooper Street and Mill Street Malls. Incorporating a state of the art photovoltaic system and interactive displays

PUBLICATIONS / EXHIBITIONS

COLORADO HOMES & LIFESTYLES

Grynberg Residence
March 2001

SOJOURNER

Wilson Residence
June 2000

AWARDS

AIA WESTERN MOUNTAIN REGION

Citation Award • Wagner Park Edge
with Willis Pember Architects, Inc.
November 2003

AIA COLORADO

Merit Award • Wagner Park Edge
with Willis Pember Architects, Inc.
November 2002

AIA COLORADO

Citation Award • Aspen Smallworks
Pember + Reid Architects, Inc.
December 1994

Exhibit 5g | Schmueser Gordon Meyer Qualifications



Project Engineer,
Traffic Engineer
Transportation Team

Education
BE Civil Engineering,
Vanderbilt University, 1996

Registration/Certification
Engineer In Training, TN

General Background

Lee, a Traffic and Transportation Engineer, has worked for SGM since 2005 and has experience in the planning, design, and construction phases of transportation projects. His project experience includes projects for municipal and private clients including traffic impact studies and permitting; improvement alternatives analyses and cost feasibility studies, review of traffic plans and studies for municipalities; roadway and intersection capacity analyses; roadway, intersection and traffic signal design; signing, striping, phasing, and traffic control plans; and construction management and inspection services.

Summary of Experience

Traffic Planning. Lee has prepared traffic impact studies for various proposed developments including the redevelopment of Sunlight Mountain Resort, the Mountaineers Square North and Foothills projects in Crested Butte, Battlement Mesa Core Area, and many other development proposals throughout Colorado. His involvement ranges from project management, fieldwork and data collection, analysis and documentation, and coordination with the approval agencies. His work for local municipalities as the reviewer of proposed projects allows him to participate on both sides of the planning of development projects.

Transportation Design. Lee has completed design work on rural and urban roadway corridors, intersections, interchanges, multi-use trails, and parking lots. Recent design projects include roundabouts at the Rifle/I-70 interchange, US 6 and 9th street in Silt, and Brush Creek Road and Highline Road in Snowmass Village. Trail projects include the LoVa trail in Glenwood Springs and the ECO Trails – Eagle to Gypsum trail in Gypsum. Design experience includes roadway and shoulders, traffic signals, roundabouts, intersections, auxiliary turn lanes, guardrail, MSE and simple block retaining walls, and storm drainage systems.

Alternatives Analysis and Cost Feasibility. Many of the engineering projects Lee has worked on have considered weighing various alternative solutions to determine the most efficient, cost-effective, and enduring improvement for a given problem. Lee has analyzed various intersection configurations, signal timing schemes, access scenarios, drainage systems, and utility relocations and has a current knowledge of recent construction costs.



General Background

Dan, a Professional Engineer, has worked for SGM since 1989. He provides a diverse, multi-disciplined approach spanning 18 years of project and construction management. He is a proven Project Manager and Design Engineer for a variety of projects including state/county/municipal roadway design, district and municipal infrastructure improvements, resort and subdivision development, dam design and permitting.

Dan brings his well-rounded management and team leadership expertise to all SGM clients and projects.

Senior Engineer
Development Services
Sector Leader

Education
BS Civil Engineering
University of Minnesota
1989

BA Dual Degree
Engineering, College of
Scholastica
1987

Professional Affiliations
Professional Engineer, CO

Institute of Transportation
Engineers

Summary of Experience

Road Reconstruction. The main focus of 20 years of experience has been the reconstruction of roadways for municipalities across the Western Slope. Dan has been the Engineer of choice for Town of Vail roadway projects since 1995. Dan also has experience serving the City of Glenwood Springs, Town of Carbondale, Town of Collbran, Town of Basalt, Town of New Castle, Town of Mt Crested Butte, Garfield County, Mesa County, Pitkin County, and the Beaver Creek Metro District. Duties include Project Management and Project Engineer responsible for: public process; conceptual, preliminary and final design; coordination of the survey, utilities, sub-consultants (geotechnical, environmental, planning); drainage and pavement analysis; construction documents and bidding; construction management and administration.

Exhibit 5h | Zancanella & Associates, Inc. Qualifications

P.O. Box 1908
1011 Grand Avenue
Glenwood Springs,
CO 81602



(970) 945-5700
(970) 945-1253 Fax

ZANCANELLA AND ASSOCIATES, INC.

ENGINEERING CONSULTANTS

RESUME

THOMAS A. ZANCANELLA, P.E.

EDUCATION

Bachelor of Science in Civil Engineering
Colorado State University - 1978

SPECIALIZED COMPETENCE

Surface and Ground Water Resource studies related to Quality, Hydrology and Water Rights. Reservoir and Dam examination, evaluation and design. Geothermal, Hydrology and Reservoir studies. Geothermal and mineral water utilization design. Domestic, industrial and irrigation water system design and construction management. Waste water system design and construction management. Water, waste water development permitting. Storm water drainage evaluation and design.

REGISTRATIONS

Professional Engineer in Colorado (#20481)
Colorado Operators Certification Board Waterworks Class C
Colorado Operators Certification Board Wastewater Operator Class B
Colorado Operators Certification Board Water Distribution Class I
Colorado Operators Certification Board Wastewater Collection Class 2

PROFESSIONAL ORGANIZATIONS

American Water Resources Association
American Society of Civil Engineers
American Water Works Association
Association of State Dam Safety Officials
American Council of Engineering Companies

EMPLOYMENT HISTORY

1993 to Present	President, Principal Engineer, Zancanella & Assoc., Inc.
1990 to 1993	Principal Engineer, Jerome Gamba & Assoc., Inc.
1981 to 1990	Water Resource Engineer, Wright Water Engineers, Inc.
1979 to 1981	Oil Field Engineer, Schlumberger Well Services, Inc.
1978 to 1979	Hydro Power Engineer, Colorado Ute Electric Association

EXPERIENCE SUMMARY

Water resource analysis and water rights evaluation for land development projects in Western Colorado. Water, waste water and snow making systems for ski areas in Western Colorado. Hydrogeology and reservoir studies for geothermal wells. Hydraulic systems analysis and design for mineral hot springs spa. Water rights and reservoir investigations for mineral resource development. Project permitting relating to State Health Department, E.P.A., BLM and Corps of Engineers. Municipal water and sewer system design and construction administration. Ground water geohydrology, water well design, screen sizing and well development.